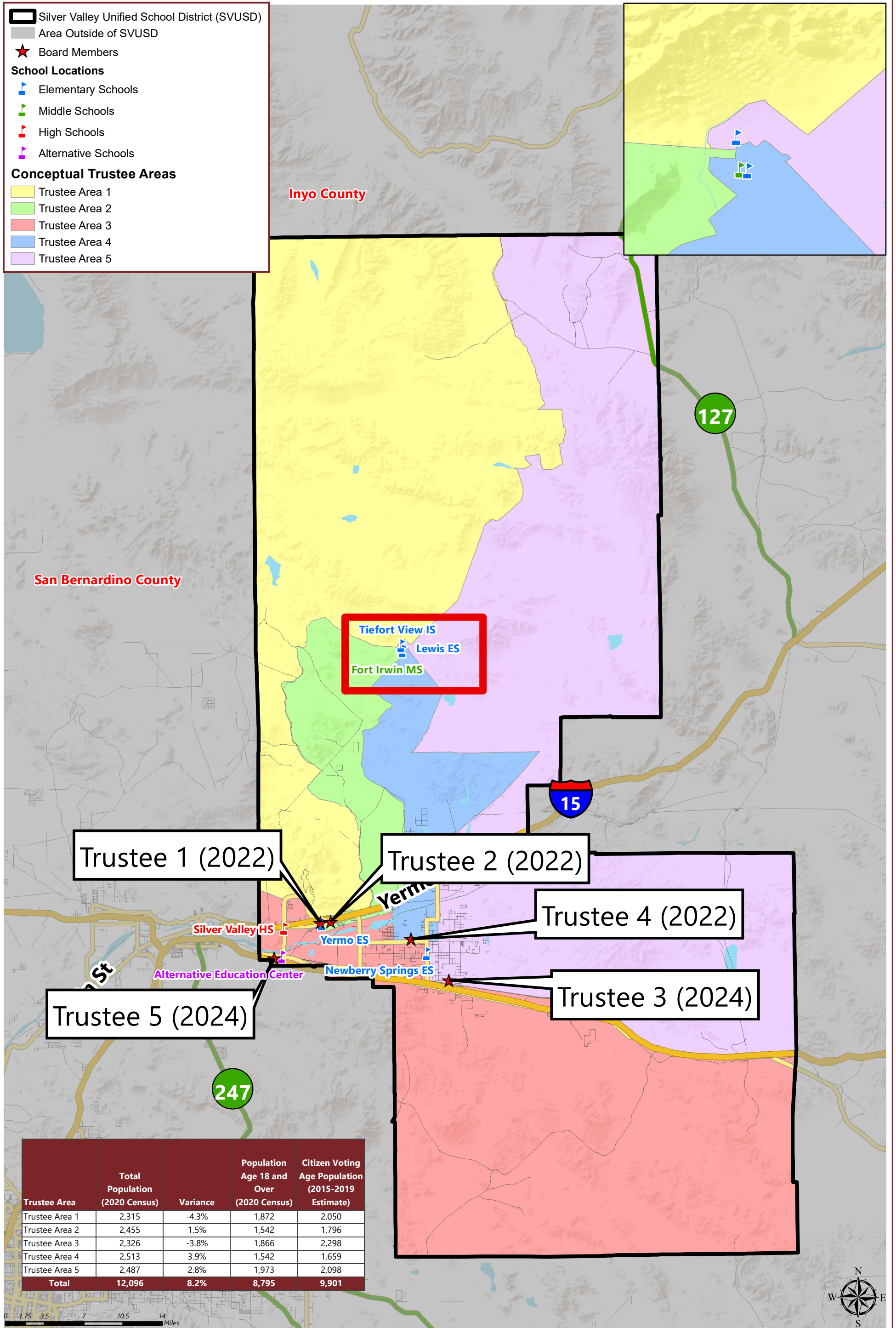


# SILVER VALLEY UNIFIED SCHOOL DISTRICT CONCEPTUAL TRUSTEE AREAS - SCENARIO 3



**SILVER VALLEY UNIFIED SCHOOL DISTRICT**

CONCEPTUAL TRUSTEE AREAS - SCENARIO 3

<b>Total Population:</b>	<b>12,096</b>	<b>Ideal Population:</b>	<b>2,419</b>	<b>Variance:</b>	<b>8.2%</b>
--------------------------	---------------	--------------------------	--------------	------------------	-------------

<b>Total Population (2020 Census)</b>					
	<b>Trustee Area 1</b>	<b>Trustee Area 2</b>	<b>Trustee Area 3</b>	<b>Trustee Area 4</b>	<b>Trustee Area 5</b>
Population	2,315	2,455	2,326	2,513	2,487
Population Variance	-104	36	-93	94	68
	-4.3%	1.5%	-3.8%	3.9%	2.8%
Hispanic/Latino	29.2%	23.0%	27.8%	26.5%	26.3%
White	42.4%	51.6%	59.9%	47.0%	45.1%
Black/ African American	14.8%	11.6%	2.1%	8.2%	12.1%
American Indian/ Alaska Native	1.6%	0.2%	1.6%	0.9%	1.6%
Asian	6.0%	4.6%	3.0%	5.9%	7.4%
Native Hawaiian/ Other Pacific Islander	1.1%	1.9%	0.7%	1.7%	1.5%
Other	0.6%	0.8%	0.3%	0.8%	0.2%
Two or More Races	4.2%	6.2%	4.6%	9.0%	5.7%

<b>Population 18 and Over (2020 Census)</b>					
	<b>Trustee Area 1</b>	<b>Trustee Area 2</b>	<b>Trustee Area 3</b>	<b>Trustee Area 4</b>	<b>Trustee Area 5</b>
Population	1,872	1,542	1,866	1,542	1,973
Hispanic/Latino	26.6%	20.9%	24.2%	21.9%	0.0%
White	44.1%	54.3%	64.1%	51.8%	47.8%
Black/ African American	15.8%	12.0%	1.6%	8.3%	12.6%
American Indian/ Alaska Native	1.7%	0.3%	1.9%	0.9%	1.8%
Asian	7.2%	5.0%	3.1%	7.2%	8.1%
Native Hawaiian/ Other Pacific Islander	0.7%	2.2%	0.3%	1.8%	1.1%
Other	0.6%	0.9%	0.3%	1.0%	0.2%
Two or More Races	3.2%	4.4%	4.6%	7.2%	4.8%

<b>Citizens by Voting Age Population Estimate (2015-2019)</b>					
	<b>Trustee Area 1</b>	<b>Trustee Area 2</b>	<b>Trustee Area 3</b>	<b>Trustee Area 4</b>	<b>Trustee Area 5</b>
Population	2,050	1,796	2,298	1,659	2,098
Hispanic/Latino	23.4%	22.8%	22.8%	17.6%	19.1%
White	46.6%	56.3%	70.0%	57.5%	52.7%
Black/ African American	18.4%	12.7%	1.8%	10.3%	14.0%
American Indian/ Alaska Native	0.4%	0.1%	2.0%	1.4%	0.9%
Asian	7.8%	4.5%	2.0%	6.6%	8.5%
Native Hawaiian/ Other Pacific Islander	0.0%	0.0%	0.0%	0.0%	0.0%
Other	N/A	N/A	N/A	N/A	N/A
Two or More Races	3.4%	3.7%	1.4%	6.5%	4.8%