



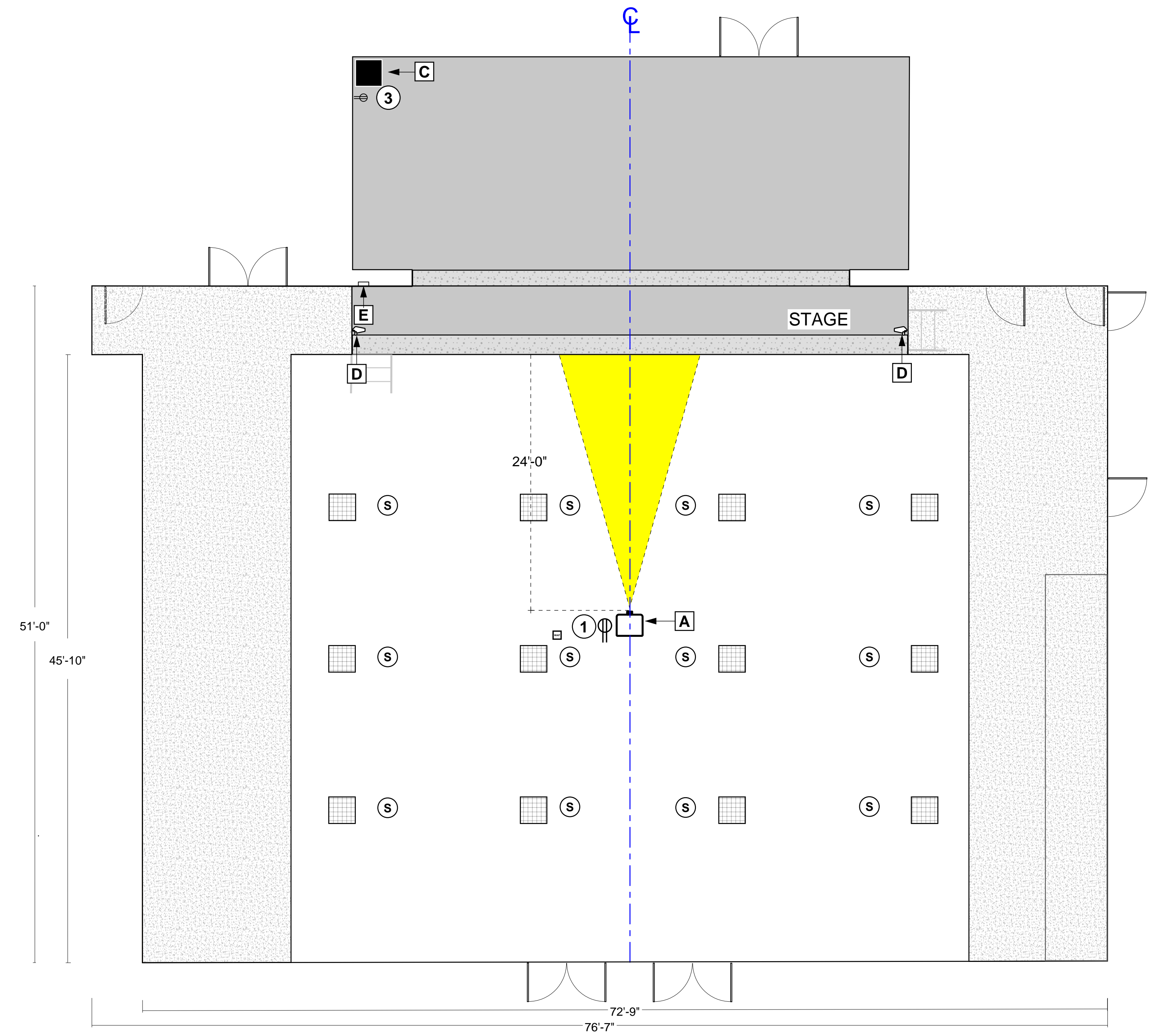
DATE	DESCRIPTION	REV
	FOR REVIEW	A

AV NOTES FACILITIES:

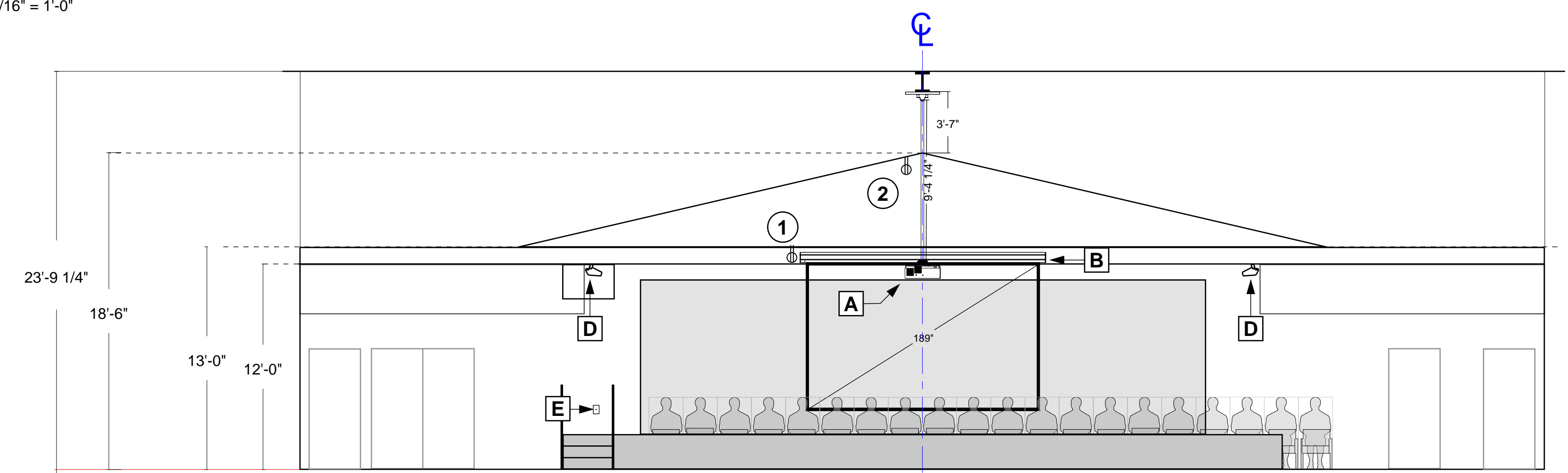
- A** **CEILING MOUNTED LASER PROJECTOR**
MFR./MODEL: NEC PA703UL-41ZL
OUTSIDE DIMENSIONS: 23.58 X 22 X 8.5"
WEIGHT: 40.1 LBS
POWER CONSUMPTION/HEAT LOAD: 647W
THROW DISTANCE 17'-4" to 40'-3", 24' OPTIMAL
MOUNT: CHIEF SYSAUW
- B** **WALL MOUNTED ELECTRIC PROJECTION SCREEN**
MFR./MODEL: DA-LITE 70279L 189" DIAGONAL 16:10 SCREEN
OUTSIDE DIMENSIONS: 173 X 160 X 8.25
WEIGHT: 170 LBS.
- C** **EXISTING OFE EQUIPMENT RACK**
MFR./MODEL: MIDDLE ATLANTIC MRK3824
- D** **WALL MOUNTED ANTENNAS**
MFR./MODEL: SHURE PA805DB-RSMA
MOUNTS: UA505-RSMA
[TYPICAL OF 2]
- E** **HDMI INPUT PLATE/EXTENDER**
MFR./MODEL: DL-1H1A-WPKT-W
1-GANG HDMI INPUT PLATE
FINAL LOCATION TBD
POE FROM RACK
- S** **CEILING MOUNTED SPEAKERS**
MFR./MODEL: QSC AC-C6T
OUTSIDE DIMENSIONS: 10.24H x 8.4" (9" CUTOUT)
WEIGHT: 7.6 LBS.
[TYP OF 12]

AV ELECTRICAL NOTES:

- 1** AT PROJECTOR LOCATION PROVIDE [1] 120VAC DUPLEX RECEPTACLE IN ADJACENT CEILING TILE WITH CAPACITY FOR 700W (6A)
- 2** AT MOTORIZED PROJECTION SCREEN LOCATION PROVIDE [1] 120VAC DUPLEX RECEPTACLE.
- 3** AT AV EQUIPMENT RACK LOCATION PROVIDE [1] 120VAC RECEPTACLE WITH MIN 15A CAPACITY.



1 TIEFORT VIEW SCHOOL MPR - AV FLOOR PLAN
SCALE: 3/16" = 1'-0"



2 TIEFORT VIEW SCHOOL MPR - FRONT ELEVATION
SCALE: 3/16" = 1'-0"

CLIENT DETAILS

SILVER VALLEY UNIFIED SCHOOL DISTRICT

PROJECT DETAILS

TIEFORT VALLEY MULTI-PURPOSE ROOM

DRAWN BY	JG	DRAWING CHECKED BY	JG
----------	----	--------------------	----

THIS DRAWING AND ITS CONTENTS ARE COPYRIGHT OF ELB US, INC. NO PART OF THIS DRAWING MAY BE REPRODUCED ELECTRONICALLY OR BY OTHER MEANS WITHOUT EXPRESS PERMISSION OF ELECTROBOARD. FIGURED DIMENSIONS AND QUANTITIES SHALL BE CHECKED ONSITE PRIOR TO THE COMMENCEMENT OF ANY WORKS.

SHEET TITLE

SHEET TITLE

SCALE AS SHOWN

PTS NUMBER 80079

SHEET NUMBER

AV01.1

